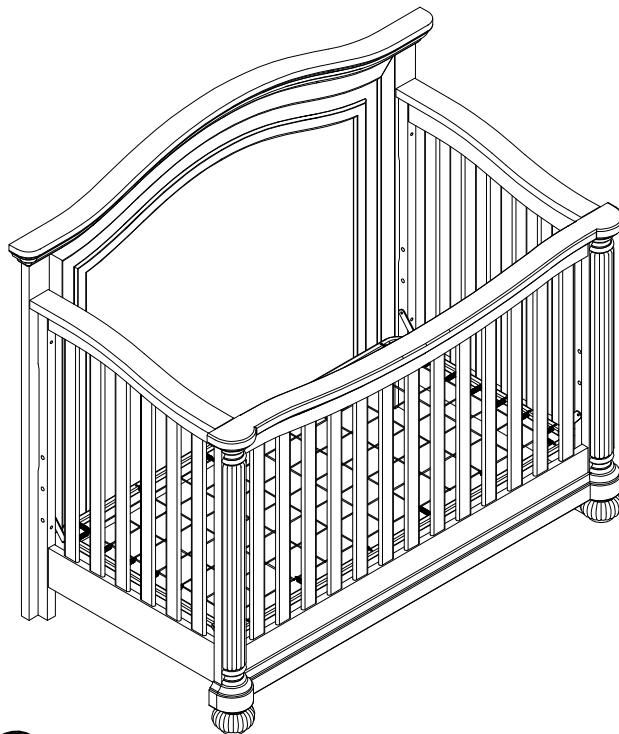


ASSEMBLY INSTRUCTIONS

for 4 in 1 life time[®] Crib

CHARLESTON

Model # 11800



KINGSLEY



GUARDRAIL and CONVERSION KIT sold separately.
Please contact retailer.

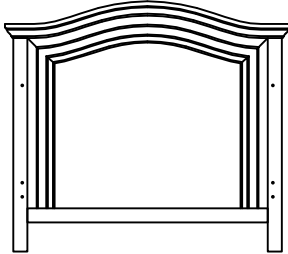
THIS PRODUCT CONFORMS TO THE APPLICABLE SECTIONS OF PUBLIC LAW 110-314 AND COMPLIES WITH THE REQUIREMENTS STATED IN 16 CFR 1219 AND 16 CFR 1217 (WHEN CHARLESTON GUARDRAIL IS USED).

Carefully remove and lay out all parts. Familiarize yourself with all exhibits and diagrams to facilitate the assembly of your crib

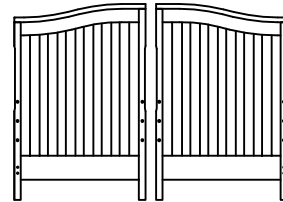
TOOLS REQUIRED :
Allenkey (supplied)

PART ENCLOSED IN CARTON

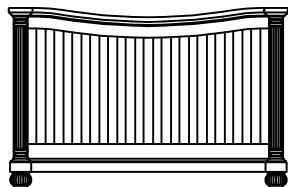
A. Head Board (1 pc)



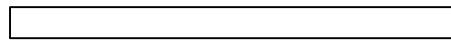
C. Side Board (2 pcs)



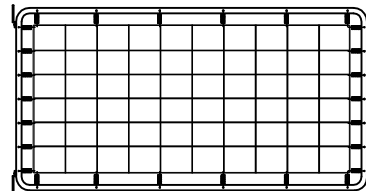
B. Foot Board (1 pc)



D. Stabilizer Bar (1 pc)



E. Mattress Spring (1 pc)

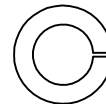


HARDWARE

(F) Allenbolt 2 1/4" (55 mm) (4 pcs)



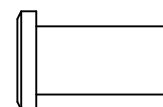
(W) Spring Washer (16 pcs)



(G) Allenbolt 2 3/4 " [70 mm] (4 pcs)



(L) Nut 3/4" [20 mm] (8 pcs)



(H) Allenbolt 1 3/4" [45 mm] (4 pcs)



(M) Barrel Nut 1" (25 mm) (4 pcs)



(J) Allenbolt 1 1/4" [30 mm] (4 pcs)



(N) Allenkey (2 pcs) (Length may vary)



Make sure the bolts are tightly locked against the washers during assembly.
(Please add an extra 1/2 revolution to all the bolts when using spring washer after tightening)